

PURE RIDE
CATALOG 2020 | EN

SHERCO
MOTORCYCLES





SUMMARY | CATALOG 2020

THE COMPANY / TECHNOLOGY AND KNOW-HOW.....	P2-3
COMPETITION	P4 TO 7
20 TH ANNIVERSARY	P8-9

ENDURO 2020 MODELS	P10-11
- 125 SE-R.....	P12-13
- 250/300 SE-R.....	P14-15
- 250/300 SEF-R.....	P16-17
- 450/500 SEF-R.....	P18-19
- 250/300 SE FACTORY.....	P20-21
- 250/300 SEF FACTORY	P22-23
- 450/500 SEF FACTORY	P24-25
- TECHNICAL SPECIFICATIONS.....	P26-27

CROSS COUNTRY 2020 MODELS	
- 125/250/300 SC FACTORY	P28-29
- 250/300/450/500 SCF FACTORY	P30-31
- TECHNICAL SPECIFICATIONS.....	P31

RACING PARTS ENDURO / CROSS COUNTRY	P32 TO 35
--	-----------

SUPERMOTARD 2020 MODELS	
- SUPERMOTARD 125/450/500.....	P36-37
- TECHNICAL SPECIFICATIONS.....	P37

TRIAL 2020 MODELS	P38-39
- 125 ST-R	P40-41
- 250/300 ST-R.....	P42-43
- 125 FST	P44-45
- 250/300 FST.....	P46-47
- TECHNICAL SPECIFICATIONS.....	P48-49

RACING PARTS TRIAL	P50
---------------------------------	-----

LEISURE 2020 MODELS	
- 125 TY CLASSIC	P52-53
- 125 TY CLASSIC / LONG RIDE KIT.....	P54-55

MOPED 50CC 2020 MODELS	P56-57
- RACING/STANDARD	P57-58
- TECHNICAL SPECIFICATIONS.....	P59

1999
2019

THE COMPANY

SHERCO
MOTORCYCLES

TECHNOLOGY AND KNOW-HOW

20

ANNIVERSARY

- 1998** | SHERCO IS FOUNDED
- 1999** | THE FIRST TRIAL BIKE IS MANUFACTURED
- 2004** | THE FIRST ENDURO BIKE IS MANUFACTURED
- 2009** | SHERCO 1ST DAKAR
- 2010** | RALLY WORLD CHAMPIONSHIP TITLE
- 2016** | 1ST ENDURO GP CHAMPIONSHIP TITLE



THOMAS TEISSIER
GENERAL MANAGER

MARC TEISSIER
FOUNDER
CHIEF EXECUTIVE OFFICER

STEPHANIE TEISSIER
DESIGN MANAGER



THE FACTORY'S MANAGEMENT TEAM IS CAREFUL NOT TO LEAVE ANY DETAIL TO CHANGE, THEIR CHARTER IS TO ENSURE THAT THE FINAL CUSTOMER RECEIVES A BIKE MANUFACTURED WITH FLAWLESS QUALITY SO THAT THEY WILL BE PROUD TO BE RIDING A SHERCO.

THE COMPANY ALONG WITH ALL THE TEAM MEMBERS ARE INVOLVED AND PASSIONATE, THEY ARE UNITED AND MOVING IN THE SAME DIRECTION: TO MAKE THE FRENCH BRAND THE REFERENCE IN THE OFF-ROAD MARKET.

COMPETITION

EXTREME / ENDOURO

SHERCO
MOTORCYCLES

WADE YOUNG

SOUTH AFRICA - 04/05/1996

2018

- 1st RB ROMANIACS, Romania
- 1st RB MEGAWATT, Polonia
- 1st SEA TO SKY, Germany
- 1st ROOF OF AFRICA, South Africa
- 1st MACHETE HARD ENDOURO, RD
- 1st LICQ ATHEREY, France
- 1st WILDWOOD ROCK, Australia
- 1st XROSS, Serbia

2019

- 1st TOUGH LIKE RORR, USA
- 1st XROSS, Serbia
- 1st BAD MEDECINE HARD ENDOURO, USA



MARIO ROMAN

SPAIN - 17/01/1990

2018

- 1st BATTLE OF VIKINGS, Sweden
- 1st HELLS GATE, Italy
- 1st GORDEXOLA, Spain
- 1st RB LOS ANDES, Chile
- 1st HIXPANIA, Spain
- 1st EN'DUO, France
- 1st ALESTREM, France

2019

- 1st BATTLE OF VIKINGS, Sweden
- 1st GORDEXOLA, Spain
- 1st XL LAGARES, Portugal
- 3rd ERZBERG RODEO, Austria



MATTEO CAVALLO

ITALIE - 11/10/1995

- JUNIOR WORLD ENDOURO GP CHAMPION, 2018
- 1st ITALIA E1 ENDOURO GP

THEO ESPINASSE

FRANCE - 24/12/1997

- JUNIOR FRANCE CHAMPION, 2018
- WORLD VICE CHAMPION JUNIOR, 2018
- 3rd ISDE 2018 JUNIOR TROPHY

JACK EDMONDSON

GREAT BRITAIN - 01/05/1997

- 1st BRITISH ENDOURO E2 CHAMPIONSHIP
- CURRENT 2nd OF J2 ENDOURO GP

HAMISH MACDONALD

NEW-ZEALAND - 28/03/1999

- VICE WORLD CHAMPION YOUTH 125CC
- CURRENT LEADER YOUTH 125CC CHAMPIONSHIP

DAN MUNDELL

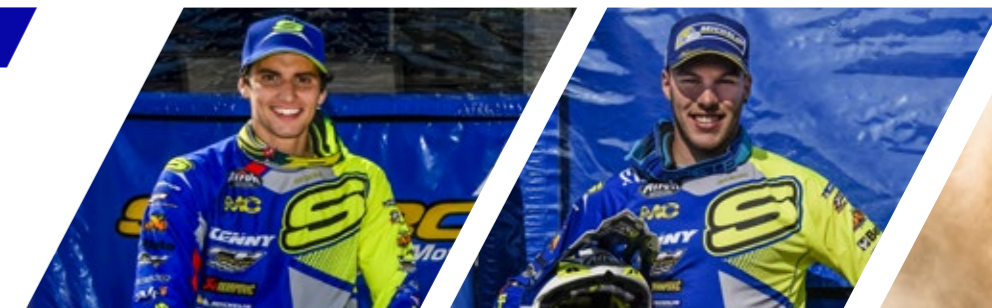
GREAT BRITAIN - 02/12/1998

- 1st YOUTH 125CC BRITISH CHAMPIONSHIP
- 3rd YOUTH 125CC ENDOURO GP

JEREMY TARROUX

FRANCE - 13/08/1986

- WINNER ISDE WORLD TROPHY, 2017
- CHAMPION OF FRANCE E1, 2017
- CLASSIC GRAND SLAM, 2017
- CURRENT LEADER OF FRENCH ENDOURO CHAMPIONSHIP
- GRAPPE DE CYRANO, France, 2019
- RAND'AUVERGNE, France, 2019



COMPETITION

RALLY / TRIAL

EMMA BRISTOW

GREAT BRITAIN - 29/10/1990

- TRIAL GP WORLD CHAMPION, 2014
- TRIAL GP WORLD CHAMPION, 2015
- TRIAL GP WORLD CHAMPION, 2016
- TRIAL GP WORLD CHAMPION, 2017
- TRIAL GP WORLD CHAMPION, 2018
- CURRENT LEADER TRIAL GP 2019



MIQUEL GELABERT

SPAIN - 06/02/1998

- 1st PODIUM TRIAL GP IN 2018
- TOP 10 TRIAL GP 2019



ALEX FERRER

FRANCE - 30/05/1986

- FRANCE CHAMPION 2012
- FRANCE CHAMPION 2015
- FRANCE CHAMPION 2016
- FRANCE CHAMPION 2017
- FRANCE CHAMPION 2018

JACK PEACE

GREAT BRITAIN - 10/03/2000

DAN PEACE

GREAT BRITAIN - 30/07/1998



SHERCO
MOTORCYCLES

MICHAEL METGE

FRANCE - 26/03/1979

- VICTORY STAGE 9 IN DAKAR, 2019
- 2 STAGE VICTORIES IN MERZOUGA RALLY, 2019
- 1st PANAFRICA, 2018
- 1st BAJA ARAGON, 2018

LORENZO SANTOLINO

SPAIN - 04/08/1987

- 3rd PLACE STAGE 4 IN DAKAR, 2019
- 1st ENDURO CUP RALLY DU MAROC, 2017
- 7 SPAIN ENDURO CHAMPIONSHIP TITLES



ARAVIND KP

INDIA - 11/12/1985

- 2nd INDIAN RIDER WHO COMPLETED THE DAKAR IN THE HISTORY

1999
2019

20TH ANNIVERSARY

SHERCO
MOTORCYCLES

1999
2019

20

ANNIVERSARY



ENDURO

2020 Models

- 125 SE-R P12-13
- 250/300 SE-R P14-15
- 250/300/450/500 SEF-R P16 TO 19

- 250/300 SE FACTORY P20-21
- 250/300/450/500 SEF FACTORY P22 TO 25
- TECHNICAL SPECIFICATIONS P26-27



AS FUN AS POWERFUL



CYCLE PART

ENGINE PART

- › WP XPLOR fork
- › WP shock absorber
- › Black anodized EXCEL rims
- › 2020 Racing graphic kit
- › MICHELIN tires

- › DOMINO bi-color grips
- › Lighter weight swingarm
- › Redesigned linkage system: less friction more comfortable ride

- › Manganese color clutch cover
- › Manganese color ignition cover
- › Manganese color cylinder head
- › New simplified exhaust valve with height adjustment

- › New piston profile: more stable and more reliable
- › Improved high speed performance due to a new map: Higher top speed and more suitable for cross special tests



CYCLE PART

ENGINE PART

- › WP XPLOR fork
- › WP shock absorber
- › Black anodized EXCEL rims
- › 2020 Racing graphic kit
- › MICHELIN tires

- › DOMINO bi-color grips
- › Lighter weight swingarm
- › New muffler: lighter and more efficient

- › Manganese color clutch cover
- › Manganese color ignition cover
- › Manganese color cylinder head
- › Shorter intake manifold: better performance at low speeds with improved responsiveness
- › Reduced clutch lever effort [-20%]

- › New lightweight clutch hub
- › New profile for the GOMOTO: more efficient and more waterproof
- › Redesigned reed valve box: improved efficiency and more watertight
- › Engine central castings modified for better linear flow and improved performance in mid-range

250/300
SE-R

2 STROKE

FOCUS
ON EFFICIENCY

ENDURO
RACING



TAKE CONTROL



CYCLE PART

- › WP XPLOR fork
- › WP shock absorber
- › Black anodized EXCEL rims
- › 2020 Racing graphic kit

- › MICHELIN tires
- › Bi-Color DOMINO grips
- › Lighter weight swingarm

ENGINE PART

- › Manganese color clutch cover
- › Manganese color ignition cover
- › Manganese color cylinder head cover
- › Lubrication system sprocket assembly lightened: less inertia resulting in faster acceleration

- › Gear selection spring and components improved: shifting accuracy improved [+ 60%]
- › Timing distribution chain improved resulting in less friction and reduced pad wear



CYCLE PART

ENGINE PART

- › WP XPLOR fork
- › WP shock absorber
- › Black anodized EXCEL rims
- › 2020 Racing graphic Kit

- › MICHELIN tires
- › DOMINO bi-color grips
- › Lighter weight swingarm

- › Manganese color clutch cover
- › Manganese color ignition cover
- › Manganese color cylinder head cover
- › New timing distribution chain: less friction and quieter

- › Full engine lightening campaign (freewheel gear, primary gear, oil pump inter-gear, complete crankshaft, oil pump gear, balancing system, clutch hub, primary transmission clutch unit lightened and new clutch disc material, seal and needle bearing changes) : more manageable and more efficient

450/500
SEF-R

4 STROKE

DOMINATE
THE TRACK

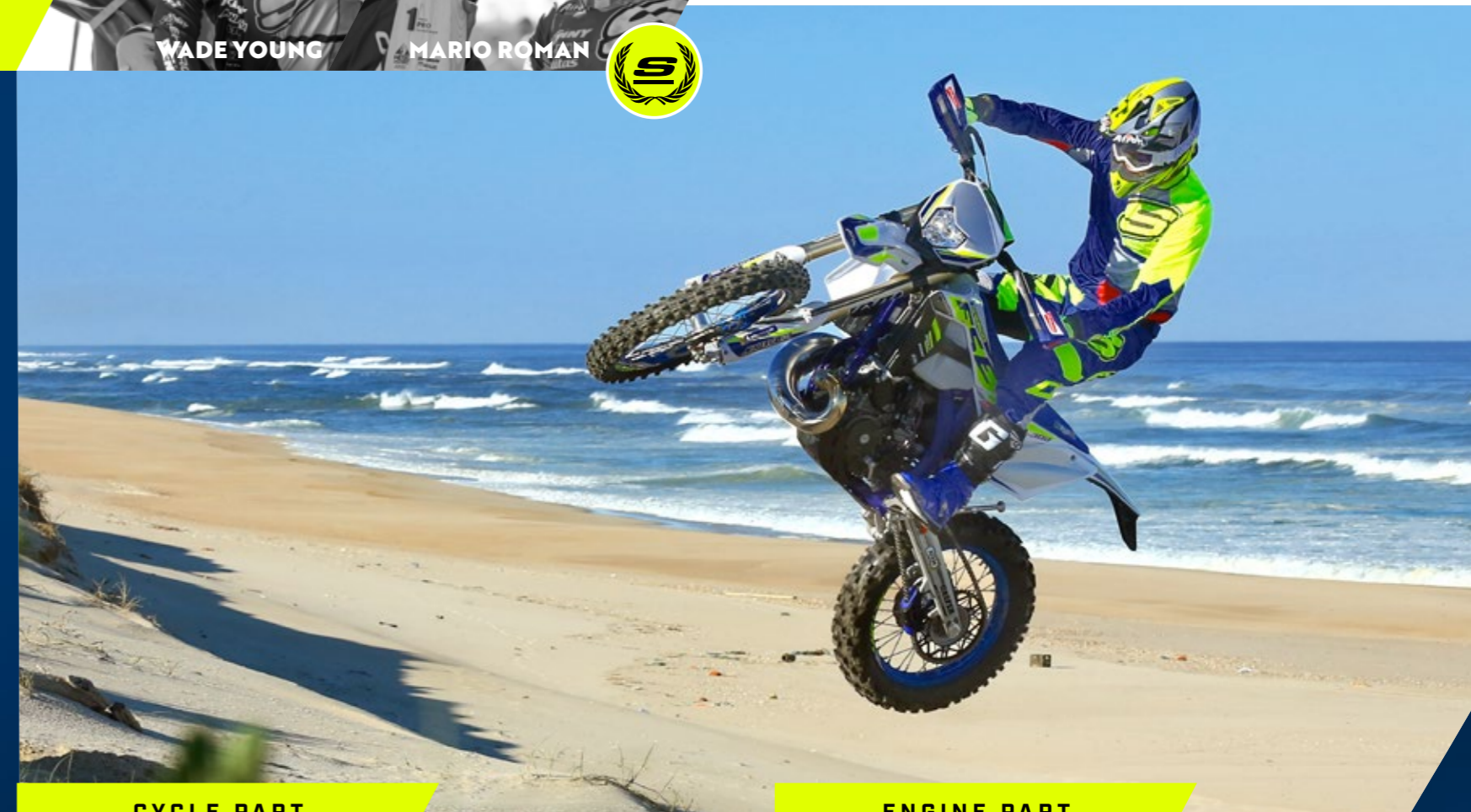
ENDURO
RACING





WADE YOUNG

MARIO ROMAN



CYCLE PART

ENGINE PART

- › Front / Rear suspensions: K.Y.B
- › SHIDO lithium ion battery
- › New blue frame protectors
- › New Sherco Factory silencer: lighter and more efficient
- › New petcock with simplified access and 1.5L reserve adjustment

- › AXP skid plate
- › Blue anodized EXCEL rims
- › GALFER front brake disc
- › AFAM steel fork crown – improved strength
- › 2020 Factory graphic Kit

- › Manganese color clutch cover
- › Manganese color ignition cover
- › Manganese cylinder head color
- › Shorter intake manifold: better performance at low speeds with improved responsiveness
- › Reduced clutch lever effort [-20%]

- › New lightweight clutch hub
- › New profile for the GOMOTO: more efficient and more waterproof
- › Redesigned reed valve box: improved efficiency and more watertight
- › Engine central castings modified for better linear flow and improved performance in mid-range
- › Lightweight SBV sprocket



THEO ESPINASSE

MATTEO CAVALLO

250/300 SEF FACTORY

4 STROKE

PERFORMANCE AND PRECISION

ENDURO
FACTORY

ENDURO
FACTORY



CYCLE PART

- › Front / Rear suspensions: K.Y.B
- › SHIDO lithium ion battery
- › New blue frame protectors
- › AKRAPOVIC exhaust system
- › AXP slidplate

ENGINE PART

- › Anodized blue EXCEL rims
- › GALFER front brake disc
- › AFAM steel fork crown – improved strength
- › 2020 Factory graphic Kit
- › Manganese color clutch cover
- › Manganese color ignition cover
- › Manganese color cylinder head cover
- › Lubrication system sprocket assembly lightened: less inertia resulting in faster acceleration
- › Gear selection spring and components improved: shifting accuracy improved (+ 60%)
- › Timing distribution chain improved resulting in less friction and reduced pad wear





CYCLE PART

ENGINE PART

- › Front / Rear suspensions: K.Y.B
- › SHIDO lithium ion battery
- › New blue frame protectors
- › AKRAPOVIC exhaust system
- › AXP skidplate

- › Anodized blue EXCEL rims
- › GALFER front brake disc
- › AFAM steel fork crown - improved strength
- › 2020 Factory graphic Kit

- › Manganese color clutch cover
- › Manganese color ignition cover
- › Manganese color cylinder head cover
- › New timing distribution chain: less friction and quieter

- › Full engine lightening campaign (freewheel gear, primary gear, oil pump inter-gear, complete crankshaft, oil pump gear, balancing system, clutch hub, primary transmission clutch unit lightened and new clutch disc material, seal and needle bearing changes) : more manageable and more efficient

TECHNICAL SPECIFICATIONS

RACING

	2 STROKE			4 STROKE			
	125 SE-R	250 SE-R	300 SE-R	250 SEF-R	300 SEF-R	450 SEF-R	500 SEF-R
Engine	2 Stroke "single cylinder with electronically controlled valves and booster"			4 stroke DOHC, 4 valve Sherco Technology			
Displacement	124,81 cc [7.62 cu in]	249,32 cc [15.21 cu in]	293,14 cc [17.89 cu in]	248,43 cc [15,16 cu in]	303,68 cc [18.53 cu in]	449,40 cc [27.42 cu in]	478,22 cc [29,18 cu in]
Bore and stroke	54 x 54,5 mm [2,13 x 2,15 in]	66,40 x 72 mm [2,61 x 2,83 in]	72 x 72 mm [2,83 x 2,83 in]	78 x 52,2 mm [3 x 2,16 in]	84 x 54,80 mm [3,31 x 2,16 in]	95 x 63,40 mm [3,74 x 2,50 in]	98 x 63,40 mm [3,86 x 2,50 in]
Carburator	Keihin PWK 36			Synerject digital electronic fuel injection			
Cooling	Liquid system with forced circulation						
Starting	Electric Starter						
Battery	12 V / 4Ah Yuasa						
Exhaust	Aluminium silencer with carbon cap	Aluminium silencer		Inox pipe with catalytic aluminium silencer			
Transmission	6 speed sequential gearbox, primary gears and chain secondary						
Clutch	Hydraulic, multidisc in oil bath						
Ignition	DC - CDI ignition with digital advance 220 W Alternator			220 W Alternator			
Chassis	High strength Chrome-Molybdenum steel semi-perimeter						
Fuel Tank	10.4 L capacity [2.75 US gal]			9.7 L fuel tank [2.56 US gal]			
Brakes	Brembo Hydraulic Ø 260 mm [10.24 in] front Ø 220 mm [8.66 in] rear						
Front Suspension	WP XPLOR fork, adjustment at top of fork [compression, rebound] 48 mm diameter and 300 mm travel						
Rear Suspension	WP Monoshock progressive rear suspension with aluminum control rods, adjustable for high and low speed compression and spring pre-load. 330 mm [13 in] racing shock.						
Front wheel	1.60 x 21" Black EXCEL rim with MICHELIN						
Rear wheel	2.15 x 18" Black EXCEL rim with MICHELIN						
Wheelbase	1465 mm [57,68 in]	1480 mm [58.27 in]		1480 mm [58.27 in]		1490 mm [58.66 in]	
Ground clearance	355 mm [13.98 in]						
Seat base	950 mm [37,40 in]						



FACTORY

	2 STROKE		4 STROKE			
	250 SE FACTORY	300 SE FACTORY	250 SEF FACTORY	300 SEF FACTORY	450 SEF FACTORY	500 SEF FACTORY
Engine	2 Stroke "single cylinder with electronically controlled valves and booster"		4 stroke DOHC, 4 valve Sherco Technology			
Displacement	249,32 cc [15.21 cu in]	293,14 cc [17.89 cu in]	248,43 cc [15,16 cu in]	303,68 cc [18.53 cu in]	449,40 cc [27.42 cu in]	478,22 cc [29,18 cu in]
Bore and stroke	66,40 x 72 mm [2,61 x 2,83 in]	72 x 72 mm [2,83 x 2,83 in]	78 x 52,2 mm [3 x 2,16 in]	84 x 54,80 mm [3,31 x 2,16 in]	95 x 63,40 mm [3,74 x 2,50 in]	98 x 63,40 mm [3,86 x 2,50 in]
Carburator	Keihin PWK 36		Synerject digital electronic fuel injection			
Cooling	Liquid system with forced circulation					
Starting	Electric Starter					
Battery	Shido LTZ5S Lithium					
Exhaust	Sherco Factory silencer		Full Akrapovic			
Transmission	6 speed sequential gearbox, primary gears and chain secondary					
Clutch	Hydraulic, multidisc in oil bath					
Ignition	DC - CDI ignition with digital advance 220 W Alternator		220 W Alternator			
Chassis	High strength Chrome-Molybdenum steel semi-perimeter					
Fuel Tank	10.4 L capacity [2.75 US gal]		9.7 L fuel tank [2.56 US gal]			
Brakes	Brembo Hydraulic Ø 260 mm [10.24 in] front Ø 220 mm [8.66 in] rear					
Front Suspension	KYB fork with hydraulic adjustment and specific spring calibration for each model. Ø 48 mm tubes, 300 mm travel					
Rear Suspension	Rear suspension: KYB shock absorber with hydraulic adjustment and specific spring calibration for each model. Ø 18 mm, 330 mm travel					
Front wheel	1.60 x 21" Blue EXCEL rim with MICHELIN					
Rear wheel	2.15 x 18" Blue EXCEL rim with MICHELIN					
Wheelbase	1480 mm [58.27 in]		1480 mm [58.27 in]		1490 mm [58.66 in]	
Ground clearance	355 mm [13.98 in]					
Seat base	950 mm [37,40 in]					

CROSS
COUNTRY



POWERFUL SENSATIONS AT THE HANDLEBAR

125/250/300
SC FACTORY

2 STROKE



- › Based on the 2020 Factory
- › Dunlop Geomax tires
- › Front MX style number plate
- › 13 tooth front sprocket for more aggressive behavior

250/300/450/500
SCF FACTORY

4 STROKE



TECHNICAL SPECIFICATIONS

CROSS COUNTRY

	2 STROKE			4 STROKE			
	125 SC	250 SC	300 SC	250 SCF	300 SCF	450 SCF	500 SCF
Engine	2 Stroke "single cylinder with electronically controlled valves and booster"			4 stroke DOHC, 4 valve Sherco Technology			
Displacement	124,81 cc (7,62 cu in)	249,32 cc (15,21 cu in)	303,68 cc (17,89 cu in)	248,43 cc (15,16 cu in)	303,68 cc (18,53 cu in)	449,40 cc (27,42 cu in)	478,22 cc (29,18 cu in)
Bore and stroke	54 x 54,5 mm (2,13 x 2,15 in)	66,40 x 72 mm (2,61 x 2,83 in)	72 x 72 mm (2,83 x 2,83 in)	78 x 52,2 mm (3 x 2,16 in)	84 x 54,80 mm (3,31 x 2,16 in)	95 x 63,40 mm (3,74 x 2,50 in)	98 x 63,40 mm (3,86 x 2,50 in)
Carburator	Keihin PWK 36			Synerject digital electronic fuel injection			
Battery	Shido LTZ5S Lithium						
Cooling	Liquid system with forced circulation						
Starting	Electric Starter						
Exhaust	Aluminium silencer with carbon cap	Sherco Factory Silencer		Full Akrapovic			
Transmission	6 speed sequential gearbox, primary gears and chain secondary						
Clutch	Hydraulic, multidisc in oil bath						
Ignition	DC - CDI ignition with digital advance 220 W Alternator			220 W Alternator			
Chassis	High strength Chrome-Molybdenum steel semi-perimeter						
Fuel Tank	10.4 L capacity [2.75 US gal]			9.7 L fuel tank [2.56 US gal]			
Brakes	Brembo Hydraulic Ø 260 mm [10.24 in] front Ø 220 mm [8.66 in] rear						
Front Suspension	KYB fork with hydraulic adjustment and specific spring calibration for each model. Ø 48 mm tubes, 300 mm travel						
Rear Suspension	Rear suspension: KYB shock absorber with hydraulic adjustment and specific spring calibration for each model. 18 mm, 330 mm travel						
Front wheel	1.60 x 21" Blue EXCEL rim with Dunlop Geomax						
Rear wheel	2.15 x 18" Blue EXCEL rim with Dunlop Geomax						
Wheelbase	1465 mm (57.68 in)	1480 mm [58.27 in]			1490 mm [58.66 in]		
Ground clearance	355 mm [13.98 in]						
Seat base	950 mm [37,40 in]						

RACING PARTS



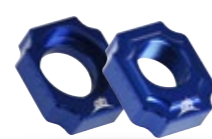
CLUCHT SLIDER BRACKET
6542



OIL PLUG
6527



REAR BRAKE PUMP CAP
6530



CHAIN TENSIONER
6535



CLUTCH/BRAKE PUMP CAP
6531/6532



FRONT/REAR AXLE PULLER
6540



BAR ENDS
6523



IGNITION COVER PLUG
6525



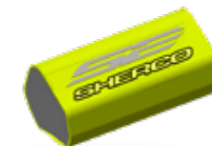
OIL FILTER COVER
6544



REAR BRAKE DISC PROTECTOR
6543



FUEL TANK CAP
6528



NEKEN PAD
7394



TOP SILICONE HOSE
5328 (250/300 4T)



LOWER SILICONE HOSE
5327 (250/300 4T)



REAR SPROCKET ALU
Z48 - 6715 / Z49 - 6534
Z50 - 6716



REAR SPROCKET STEEL/ALU
Z48 - 7289 / Z49 - 6534
Z50 - 7290 / Z51 - 7410



GALFER FRONT DISC
7395



BRAKING REAR DISC
4783



BRAKING FRONT DISC
4782



REAR FULL DISC
3789



TRACTION BELT REAR/FRONT
6820/6821



RADIATOR PROTECTIVE FOAM
4515



ROD 450-15MM
7627



CARBON PIPE GUARD 2T FMF
6546



CARBON PIPE GUARD 250/300 4T BIG ONE 6 547



CARBON PIPE GUARD 450 4T BIG ONE 6653

ADDITIONAL CARBON FUEL TANK
7898



AKRAPOVIC EXHAUST SYSTEM SET
Ref. 4900 (250/300 4T)



AKRAPOVIC MUFFLER
5438 (450 4T)



AKRAPOVIC HEADER
5914 (450 4T)

PRIMARY TUBE AKRAPOVIC
4283



NAVIGATION SYSTEM
6023



IGNITION COVER 250/300 2T
8517



CLUTCH COVER 250 4T 125 2T
8518



CLUTCH COVER 250/300 2T 450 4T
8517



IGNITION COVER 250/300 4T
8520



AXP GUARD 250/300 2T
8029



AXP GUARD 250/300 4T
8030



AKRAPOVIC DB KILLER
4287



CARBON PROTECTOR AKRAPOVIC
4976



SILENCER 125
5910



AKRAPOVIC EXHAUST SYSTEM SET
Ref. 4900 (250/300 4T)



FMF EXHAUST PIPE
5311 (250/300 2T)



FMF SILENCER
7334 (250/300 2T)



STEEL PLASTIC PIPE GUARD
8516



AXP GUARD 125 2T
8031

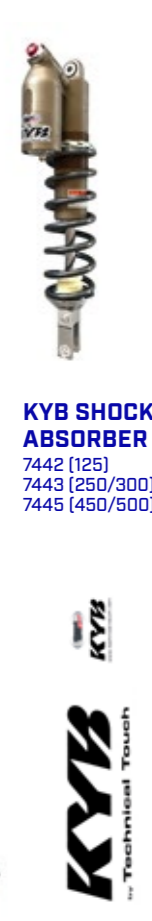


AXP GUARD 450/500 4T
8035

RACING PARTS



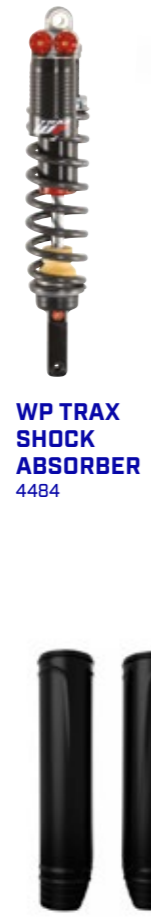
KYB FORK
7438 (125)
7439 (250/300)
7441 (450/500)



KYB STICKERS KIT
7868



WP CONE VALVE FORK
4483



WP TRAX SHOCK ABSORBER
4484



GRIPS DOMINO
7595



FAN KIT
3913 (250/300/450 4T)
6202 (250/300 2T)



PLASTIC UPPER FORK PROTECTION
8521



FOAM AIR FILTER
3956



SUPER B BATTERY
3677



DONUTS
6801



TM DESIGN RACING CHAIN GUIDE
2916



AIR FILTER FOR SAND
4327



BATTERY SHIDO
7335



RADIATOR GUARD
5323 (250/300/450 4T)
5408 (250/300 2T)



OVERSIZED CALIPER BRACKET
4784



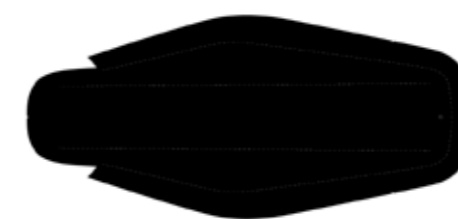
AIR FILTER COVER WASHING
4476



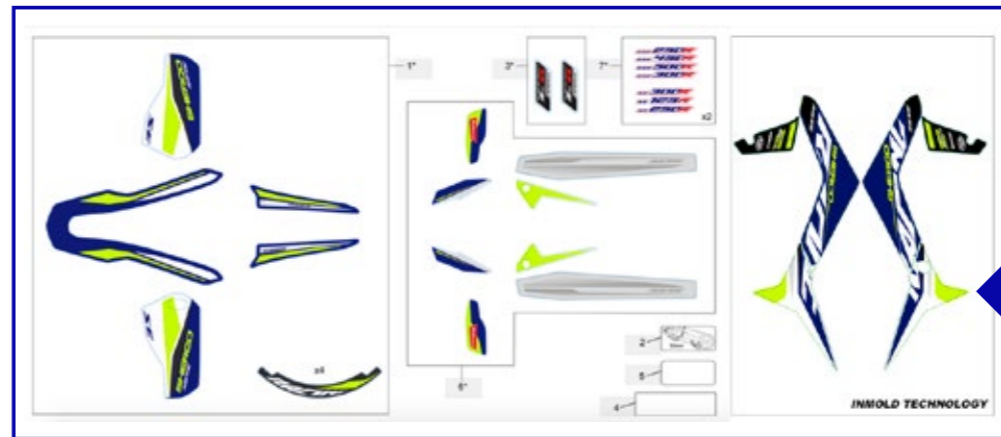
BATTERY HOLD
4011



NEKEN TRIPLE CLAMPS
7114 (sup)
7115 (inf)



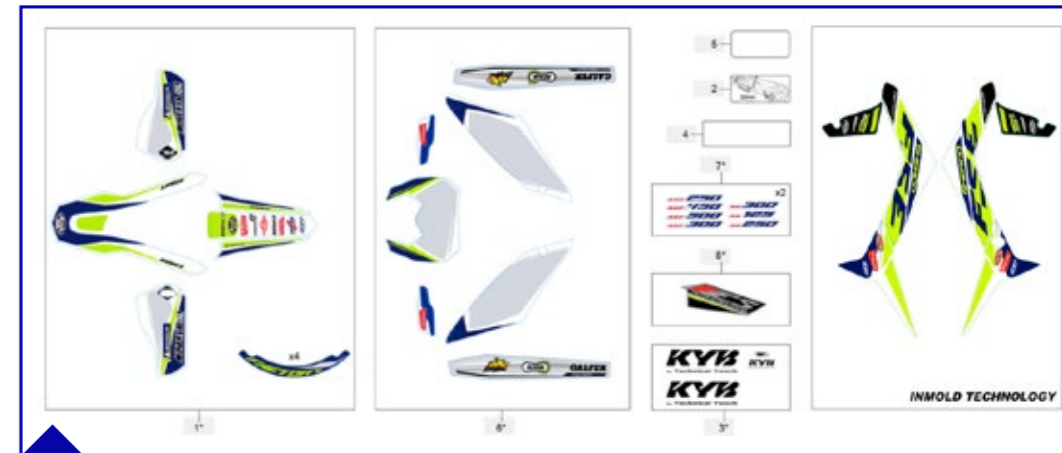
RACING SEAT
6689
RACING SEAT COVER
7206



RACING STICKERS KIT
1 - 7958
2 - 3735
3 - 7777
4 - 4516 (frame number protection)
5 - 5617 (constructor plate protection)

6 - 7959
7 - 8209 (125) / 8210 (250 SE) / 8211 (300 SE)
8212 (250 SEF) / 8213 (300 SEF) /
8214 (450 SEF) 8215 (500 SEF)

RACING IN-MOLD PLASTIC KIT
1 - 7964 / 7963
2 - 7965 / 7962



FACTORY STICKERS KIT

1 - 7970
2 - 3735
3 - 7668

4 - 4516 (frame number protection)
5 - 5617 (constructor plate protection)
6 - 7922 (450 SEF)/7605 (500 SEF)

7 - 8203 (250 SE) / 8204 (300 SE) /
8205 (250 SEF) / 8206 (300 SEF) /
8207 (450 SEF) / 8208 (500 SEF)



FACTORY SEAT
7487

FACTORY SEAT COVER
7653



CROSS PLATE STICKER
7921

**SUPER
MOTARD**

450/500 SUPERMOTARD

4 STROKE



SHERCO
MOTORCYCLES

TECHNICAL SPECIFICATIONS



125 SUPERMOTARD

2 STROKE



	2 STROKE	4 STROKE	
	125 SM	450 SM	500 SM
Engine	2 STROKE "single cylinder with electronically controlled valves and booster"	4 STROKE DOHC, 4 valve Sherco technology	
Displacement	124,81 cc	449,40 cc	478,22 cc
Bore & Stroke	54 x 54,5 mm	95 x 63,40 mm	98 x 63,40 mm
Carburator	Keihin PWK 36	Synerject digital electronic fuel injection	
Starter	Electric starter		
Exhaust	Aluminium silencer with carbon end cap	Full Akrapovic	
Fuel Tank	10,4L capacity [2,75 US gal]	9,7L capacity [2,57 US gal]	
Brakes	Hydraulic disc Ø270mm (front) Ø220mm (rear)	Hydraulic disc, Ø310mm (front) Ø220mm (rear)	
Front suspension	Gold series SACHS USD Fork Ø48mm and 330mm travel	PAIOLI USD Fork Ø46mm and 300mm travel	
Rear suspension	Progressive suspension by aluminum tipper with mono-damper WP adjustable low compressions and high speeds of relaxation and pre-load spring. 330 mm travel	Progressive aluminum tilting suspension with Sachs mono-damper with separate cylinder. 300mm travel	
Front wheel	Black Excel rim 3,5" x 17" and Michelin tire 120/70 -17"		
Rear wheel	Black Excel rim 5" x 17" and Michelin tire 150/60 -17"		
Wheelbase	1455 mm	1480 mm	
Ground clearance	320 mm		
Seat height	910 mm		



RACING FACTORY

PERFECT BIKE FOR LEARNING



CYCLE PART

ENGINE PART

- › Z42 rear sprocket: improved traction
- › TECH steel fork

- › R16V shock absorber
- › 2020 Racing graphics kit

- › Clutch evolution continued, springs and lever redesigned: better feel, increased reliability
- › New CDI curve

- › New VERTEX piston: stronger with better performance at low revs
- › NGK spark suppressor: better combustion, stronger spark



CYCLE PART

ENGINE PART

- › TECH steel fork
- › R16V shock absorber

- › 2020 Racing graphics kit

- › Cylinder head: continuous evolution of the compression ratio and dome shape for better engine performance

250/300
ST-R
2 STROKE

FUN AND EFFICIENT



EXCELLENT POWER FOR THE YOUTH RIDER



CYCLE PART

- › Gray frame
- › Z42 rear sprocket: improved traction
- › Adjustable aluminum TECH Fork

- › NEKEN handlebar foam pad
- › REIGER shock absorber
- › 2020 Factory graphic Kit

ENGINE PART

- › Clutch evolution continued, springs and lever redesigned: better feel, increased reliability
- › Interchangeable cylinder head dome
- › New CDI curve

- › New VERTEX piston: stronger with better performance at low revs
- › NGK spark suppressor: better combustion, stronger spark



EMMA BRISTOW

250/300
FST

2 STROKE

THE TOP TRIAL MODEL

TRIAL
FACTORY

TRIAL
FACTORY



CYCLE PART

ENGINE PART

- › Adjustable aluminum TECH Fork
- › NEKEN handlebar foam pad
- › REIGER shock absorber

- › Removable rear exhaust support
- › 2020 Factory graphic Kit

- › Cylinder head: Continuous evolution of the compression ratio and dome shape for better engine performance

- › Interchangeable cylinder head dome for better engine performance



TECHNICAL SPECIFICATIONS

RACING

	2 STROKE		
	125 ST-R	250 ST-R	300 ST-R
Engine	2 stroke Sherco proprietary design		
Displacement	123.70 cc [7.55 cu in]	249.70 cc [15.24 cu in]	294 cc [17.94 cu in]
Bore x stroke	54 x 54 mm [2.13 x 2.13 in]	72,80 x 60 mm [2.87 x 2.36 in]	79 x 60 mm [3.11 x 2.36 in]
Cylinder	Nikasil coated cylinder		
Lubrication	2% oil pre-mix		
Fuel	Unleaded gasoline 98 Octane		
Carburator	Keihin Ø 28 mm		
Cooling	Liquid system		
Start	Geared system with folding lever		
Exhaust	Stainless steel exhaust pipe with an integrated aluminium muffler		
Transmission	5 speed sequential gearbox with security selector system. Primary gear drive chain secondary drive		
Clutch	Hydraulic, diaphragm system		
Electronic ignition	Hidria Digital		
Chassis	Tubular section Chrome-moly		
Fuel tank	Polyamide - 2.4 L [0.63 US Gal] capacity		
Brakes	Hydraulically activated, floating 185 mm [7.28 in] front and 145 mm [1.54 in] rear		
Font suspension	Steel fork Ø 39 mm [1.54 in], 165 mm [6.50 in] travel		
Rear suspension	Progressive link system with single adjustable shock absorber 175 mm [6.89 in] travel		
Rear shok absorber	R16V		
Front wheel	Morad 21" black rim		
Rear wheel	Morad 18" black rim		
Wheelbase	1322 mm [52.05 in]		
Ground clearance	310 mm [12.20 in]		
Seat base	685 mm [26.97 in]		



FACTORY

	2 STROKE		
	125 FST	250 FST	300 FST
Engine	2 stroke Sherco proprietary design		
Displacement	123.70 cc [7.55 cu in]	249.70 cc [15.24 cu in]	294 cc [17.94 cu in]
Bore x stroke	54 x 54 mm [2.13 x 2.13 in]	72,80 x 60 mm [2.87 x 2.36 in]	79 x 60 mm [3.11 x 2.36 in]
Cylinder	Nikasil		
Lubrication	2% oil pre-mix		
Fuel	Unleaded gasoline 98 Octane		
Carburator	Keihin Ø 28 mm		
Cooling	Liquid system		
Start	Geared system with folding lever		
Exhaust	Stainless steel exhaust pipe with an integrated aluminium muffler		
Transmission	5 speed sequential gearbox with security selector system. Primary gear drive chain secondary drive		
Clutch	Hydraulic, diaphragm system		
Electronic ignition	Hidria Digital		
Chassis	Tubular section Chrome-moly		
Fuel tank	Polyamide - 2.4 L [0.63 US Gal] capacity		
Brakes	Hydraulically activated, floating 185 mm [7.28 in] front and 145 mm [1.54 in] rear		
Front suspension	Aluminum TECH fork Ø 39 mm [1.54 in], 165 mm [6.50 in] travel with 2 settings		
Rear suspension	Progressive link system with single adjustable shock absorber 175 mm [6.89 in] travel		
Rear shock absorber	Reiger		
Front wheel	Morad 21" blue anodized aluminium rim		
Rear wheel	Morad 18" blue anodized aluminium rim		
Wheelbase	1322 mm [52.05 in]		
Ground clearance	310 mm [12.20 in]		
Seat height	685 mm [26.97 in]		

RACING PARTS



CARBON HEADLIGHT
3780



**FACTORY HANDLEBAR
HOLDER KIT**
5668



**BLACK TRIAL FOOT PEGS
S3**
7371



**SCREW FHC 8
X 35
M300**



**BLUE CHAIN
TENSIONER**
5377



**SPECER CHAIN
ADJUST**
5613



**SPRING CHAIN
TENSIONER**
5612



**RIDER FALLEN
DEVICE**
R493



GALFER FRONT DISC
5357



GALFER REAR DISC
5358



NEKEN-PAD
7828



**SHOCK ABSORBER
REIGER**
7828



WHITE HANDLEBAR
5353



**MUD PROTECTION
ACCESSORIES**
3378



**SET RUNNER CHAIN
TITANIUM OXIA**
6415



TRIAL PAD
6423



**MUDGUARD HOLDER
CARBON CERIANI**
3781/3782



**CYLINDER HEAD SET
3.0 TR BLUE OXIA**
6769



STOP ENGINE
C481



SHERCO

LEISURE

125
TY CLASSIC

4 STROKE



DISCOVER ANOTHER
WAY TO RIDE



LEISURE

125 TY CLASSIC / LONG RIDE KIT

4 STROKE

- › "Long ride" available
- › Comfortable saddle
- › Tank capacity increased from 2.1 to 4.8 L
- › Storage for 0.5 L water bottle / phone / keys



MORE COMFORTABLE
MORE PRACTICE
DESIGNED FOR YOU



MOPED 50CC | STANDARD RACING

2020 MODELS

- STANDARD FACTORY SM-R P58
- STANDARD SILVER SM-R P58
- STANDARD AMERICA SM-R P58
- STANDARD FACTORY SE-R P59

- RACING FACTORY SM-RS P58
- RACING SILVER SM-RS P58
- RACING AMERICA SM-RS P58
- RACING FACTORY SE-RS P59

**STANDARD
50CC**

50 FACTORY SM-R



50 SILVER SM-R



50 AMERICA SM-R



50 FACTORY SE-R



**RACING
50CC**

50 FACTORY SM-RS



50 SILVER SM-RS



50 AMERICA SM-RS



50 FACTORY SE-RS



	STANDARD				RACING			
	FACTORY SM-R	SILVER SM-R	AMERICA SM-R	FACTORY SE-R	FACTORY SM-RS	SILVER SM-RS	AMERICA SM-RS	FACTORY SE-RS
Engine	2-stroke Technology Minarelli AM6							
Displacement	49,70 cc (3,03 cu in)							
Bore x Stroke	40,30 x 39 mm (1.59 x 1.54 in)							
Lubrication	Automatic mix, unleaded 95 octane fuel							
Cooling	Closed circuit with constant circulation							
Starter	Kick start, gear system with retractable lever							
Carburetor	Dell'Orto							
Exhaust	Aluminum Silencer							
Transmission	6 speed gearbox							
Clutch fluid	Multidisc in oil bath							
Ignition	12 V 85 W							
Chassis	Chrome-moly steel multi tube							
Tank	7 L Capacity (1,85 US gal)							
Brakes	Hydraulic disc 300 mm (11.81 in) front and 180 mm (7.09 in) rear		Hydraulic disc 260 mm (10,23 in) front and 180 mm (7.09 in) rear		Hydraulic disc 300 mm (11.81 in) front and 180 mm (7.09 in) rear		Hydraulic disc 260 mm (10,23 in) front and 180 mm (7.09 in) rear	
Front suspension	37 mm (1.46 in) Ø telescopic				Up side down Ø 41mm			
Rear suspension	Paioli Mono-shock adjustable for preload							
Front wheel	2,50 x 17"		2,50 x 21"		2,50 x 17"		2,50 x 21"	
Rear wheel	3,50 x 17"		2,15 x 18"		3,50 x 17"		2,15 x 18"	
Weight	83 Kg							
Wheelbase	1360 mm							
Ground clearance	260 mm		300 mm		260 mm		300 mm	
Seat height	850 mm		910 mm		850 mm		910 mm	

1 ENDURO JACKET



3 ENDURO BODYWARMER



1 ENDURO JERSEY



2 ENDURO GLOVES



2 ENDURO PANTS





1 CYCLING EQUIPMENTS

2 TOWEL & SWIMWEAR



4 BODYWARMER



3 T-SHIRT & POLO



5 LIGHT JACKET AND ZIPPED HOODY



6 COAT





NOTES

A series of horizontal dotted lines for taking notes, spanning the width of the page.



SHERCO
MOTORCYCLES

SHERCO pictures, company reserves the right, in order to improve its services, to change specifications and dimensions without prior notice. Pictures are not copy-written. There may be typographical errors in this literature. Pictures were taken abroad on private land.
Photos © - Mastorgne / J.M Pouget / M. Font / M. Ravira / GB Studio - Création **MGT**

SHERCO.COM |  